



STAINLESS STEEL AND ALUMINUM ELECTRIC SUBMERSIBLE PUMPS

Models S2G54-E.5 115/1 & S2H54 E1 115/1

- 316 Stainless Steel Construction
- Built-in Carry Handle
- 2" NPT Discharge Nipple Included - 316SS
- Motors are 115vac, Single Phase and Include a 30 ft. Power Cord (PVC)
- Double Mechanical Oil Lubricated Seals With Viton® Elastomers
- Thermal Overload Protected
- Built-in Stainless Steel Strainer
- Maximum Liquid Temperature 104° F
- Maximum Flow is 87 GPM

Gorman-Rupp submersible pumps are well suited for pumping out flooded basements, pools, spas, ponds, pits, or anywhere else where the pump can be lowered into the water. The 30-foot power cord allows the pump to be lowered into areas a self-priming pump with a suction hose could not readily access. Stainless Steel construction and double mechanical seal for long life and dependability.

Model No. S1 1/2B3-E.33 12V

- Aluminum Construction with Cast Iron Impeller
- 1/3 HP, 12 Volt DC Motor
- Operates Approximately 45 Minutes on Fully Charged 55 Amp-hour Battery
- Built-in Carry Handle
- 1-1/2" NPT Discharge
- Steel Strainer Built into Pump
- Buna-N Mechanical Seal with Carbon and Ceramic Faces
- Overload Protected
- On/Off Switch
- Maximum Flow is 42 GPM

The Gorman-Rupp 12 Volt Submersible pump is designed for use with a truck battery, as a back-up unit in the event of power failure, or for use in remote locations where electricity is not available. The pump weighs 28 pounds and is constructed of aluminum with a cast iron impeller. The 30 foot power cord has battery clips for easy attachment to a 12 volt battery. Operating time is approximately 45 minutes on a fully charged 55 amp-hour battery. Maximum flow is 42 GPM.

Viton® and Teflon® are registered trademarks of E.I. DuPont.

PREMIUM HEAVY DUTY



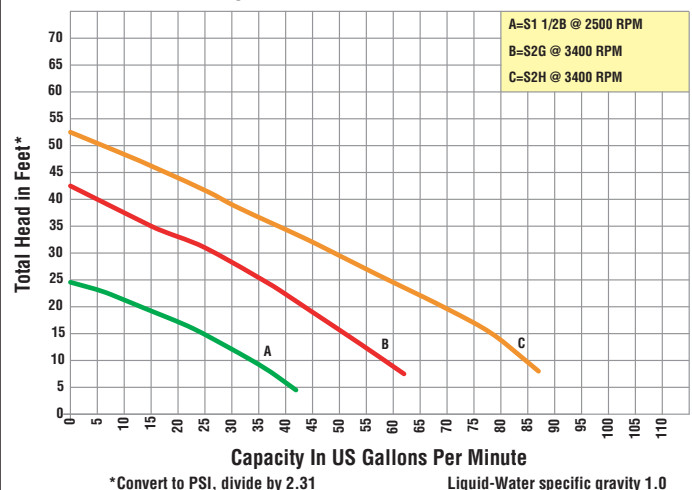
Model S1 1/2B3-E.33 12V

Shown with Optional Carrying Case and Hose Kit P/N 48782-001

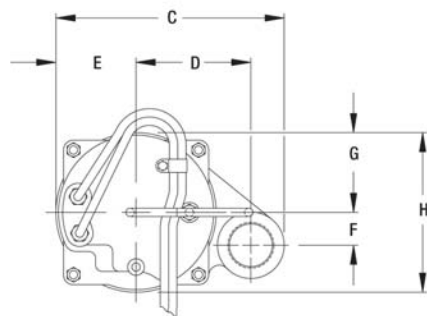


Model S2G54-E.5 115/1

Composite of Performance Curves



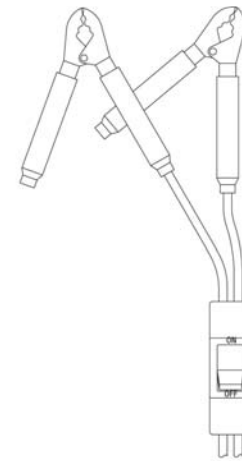
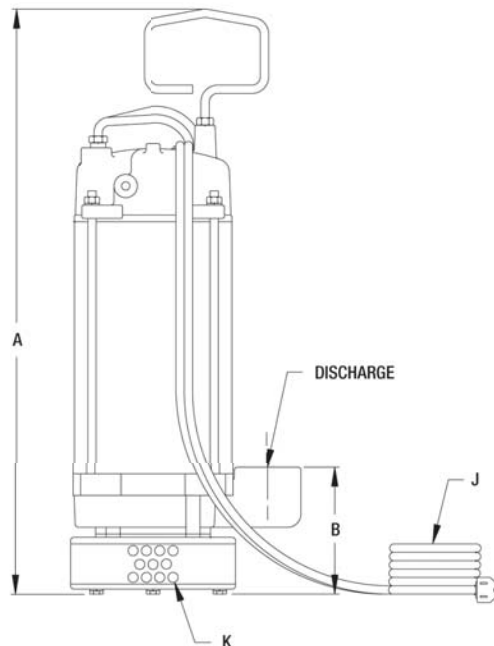
ELECTRIC SUBMERSIBLE PUMPS



DIMENSIONS:

INCHES

(MILLIMETERS)



VIEW A

| MODEL | A | B | C | D | E | F | G | H | DIS. | J CABLE LENGTH | K SUCTION STRAINER |
|-------------------|---------|---------|---------|---------|--------|--------|--------|---------|--------|---------------------|---|
| S1 1/2B3-E.33 12V | 22.00 | 4.75 | 8.55 | 4.30 | 3.00 | 1.23 | 3.00 | 6.00 | 1.50** | 30.00 FT/(9.1 M)*** | .38/(9.5) DIA. HOLES LOCATED ON .50/(12.7) STAGGERED CENTERS. |
| | (558.8) | (120.6) | (217.2) | (109.2) | (76.2) | (31.2) | (76.2) | (152.4) | | | |
| S2G54-E.5 115/1 | 14.78 | 3.31 | 8.38 | 4.00 | 3.00 | 0.00 | 3.00 | 6.00 | 2.00* | 33.00 FT/(10.1 M) | .16/(4.1) DIA. HOLES LOCATED ON .38/(9.7) STAGGERED CENTERS. |
| | (375.4) | (84.1) | (212.8) | (101.6) | (76.2) | | (76.2) | (152.4) | | | |
| S2H54-E1 115/1 | 17.34 | 4.44 | 10.00 | 4.75 | 3.75 | 0.00 | 3.75 | 7.50 | 2.00* | 33.00 FT/(10.1 M) | .19/(4.8) DIA HOLES LOCATED ON .31/(7.9) STAGGERED CENTERS. |
| | (440.4) | (112.8) | (254.0) | (120.6) | (95.2) | | (95.2) | (190.5) | | | |

(*) STANDARD NPT (MALE) PIPE THREAD. (**) STANDARD NPT (FEMALE) PIPE THREAD. (***) 2-CONDUCTOR #8 POWER CABLE NEOPRENE RUBBER INSULATION WITH BATTERY CLIPS. SEE VIEW A.

Standard Features S1 1/2B:

- Aluminum construction with cast iron impeller
- 1/3 HP, 12 VDC motor
- 30 ft. insulated (pvc) conductor cable with battery clips
- Built-in carry handle
- On/Off switch
- 1-1/2" NPT Discharge
- Steel strainer built into pump
- Buna-N mechanical seal with carbon and ceramic faces
- Overload protected
- "Off-the-Shelf" availability on this Model

Standard Features S2G &S2H:

- Upper seals carbon and ceramic faces
- Lower seals silicon-carbide and ceramic faces
- 1/2 HP 6 FULL LOAD AMPS
- 1 HP 13 FULL LOAD AMPS
- Maximum liquid temperature 104°F
- Maximum flow 87 GPM
- Maximum operating pressure S2G - 19 PSI; S2H - 23 PSI
- "Off-the-Shelf" availability on both Models
- Optional carrying case with 25 Ft. plastic hose kit (48782-001)

| MODEL | DESCRIPTION/ TYPE OF PUMP | SHIP WT. | DRIVER TYPE & HP | PORT SIZE SUC. X DIS. (NPT) | BASIC CONSTRUCTION | SEAL TYPE & ELASTOMER/ FACES | VAC | FULL LOAD AMPS | MOTOR ENCLOSURE |
|-------------------|--|----------|---------------------|-----------------------------|--------------------|----------------------------------|--------|----------------|-----------------|
| S2G54-E.5 115/1 | Electric Submersible Pumps | 33 lbs. | Elect. Motor 1/2 hp | 2" | Stainless Steel | Viton®* silicon-carbide/ ceramic | 115V | 6 | Stainless Steel |
| S2H54-E1 115/1 | Electric Submersible Pumps | 60 lbs. | Elect. Motor 1 hp | 2" | Stainless Steel | Viton®* silicon-carbide/ ceramic | 115V | 13 | Stainless Steel |
| S1 1/2B3-E.33 12V | Electric Submersible Pumps | 35 lbs. | Elect. Motor 1/3 hp | 1.5" | Aluminum | Buna Carbon ceramic | 12V DC | 30 | Aluminum |
| 48782-001 | Optional Carrying Case & 25' Plastic Hose Kit for VDC Pump | 14 lbs. | | | | | | | |

Optional Float Switches: 27471-191 Electrical rating 115/13 Amps. 30 ft. 16 ga. for 115V Models

Float Switch Standard Features:

- Mercury-Free
- Adjustable Clamp
- Proven Reliability
- Variable Pumping Range
- No Wiring
- Corrosion-Resistant
- Omni Directional
- Easily Installed



See price book page 41

CP103-104/0904

The Gorman-Rupp Company reserves the right to discontinue any model or change specifications at any time without incurring any obligation. Viton® and Teflon® are registered trademarks of E.I. DuPont.